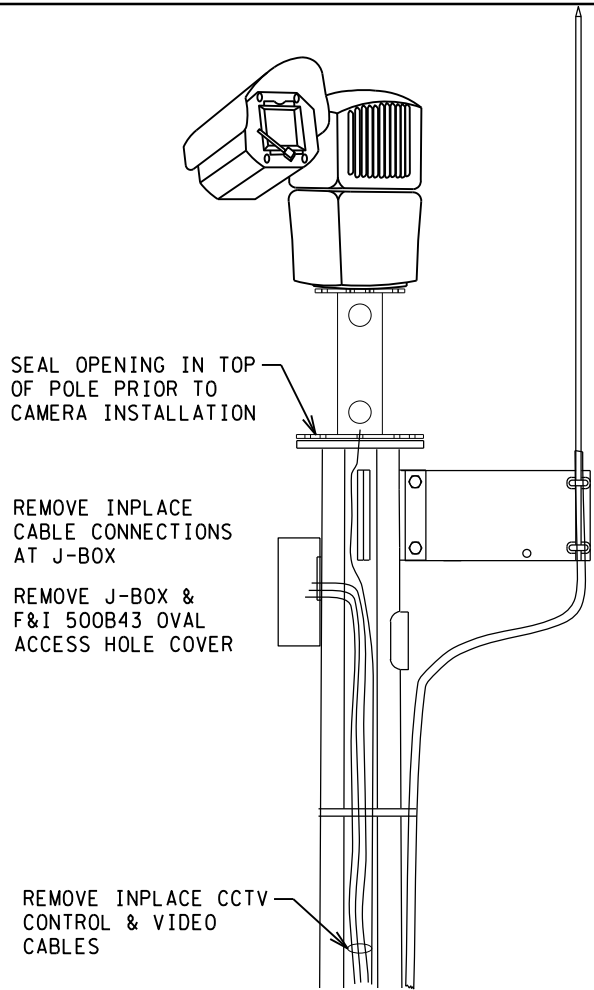
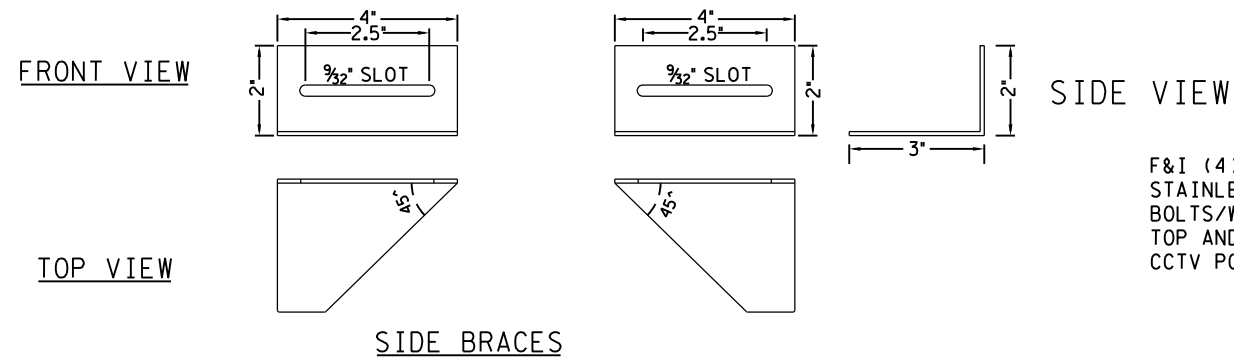
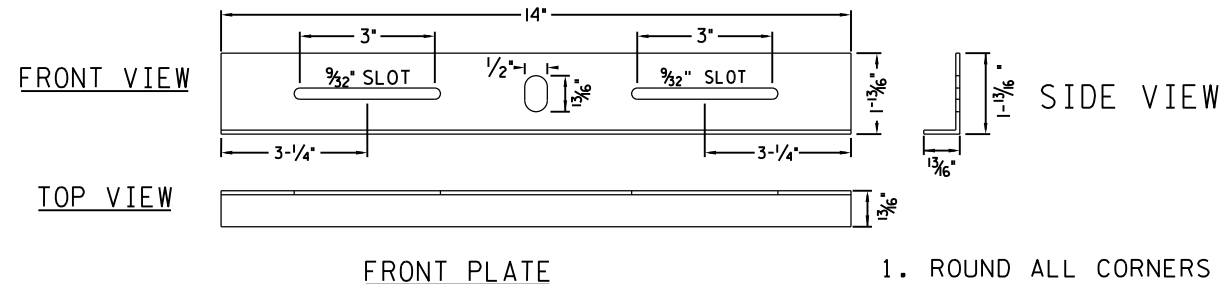
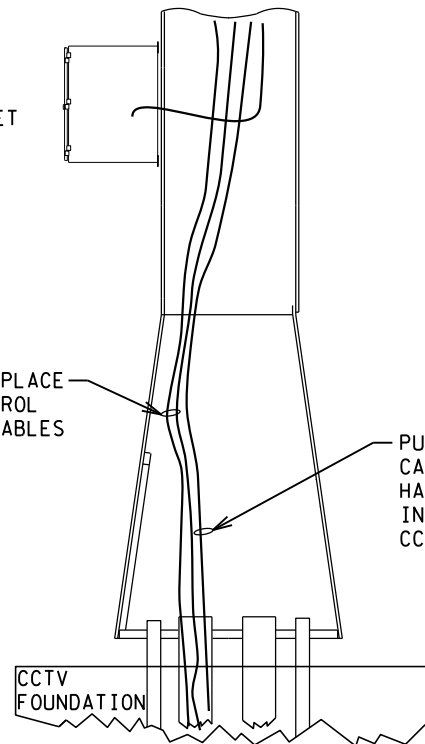


reutlan1 T79CWW161FRW023 TMS
pw81.ad.dot.state.mn.us:cddp\Documents\Projects\DM_R05Non_Project\FrwOps\Detail Drawings\CAMERA & WAVE TRONIX\CAMERA.dtl.dgn
REVISED 6/27/18
12/5/2018 10:17:02 AM
PLOT



CCTV ASSEMBLY INSTALLATION



CCTV CABINET MOUNTING BRACKET ON INPLACE POLES

(14GA STAINLESS STEEL)
(1-SET EA AT TOP & BOTTOM OF CCTV CABINET)

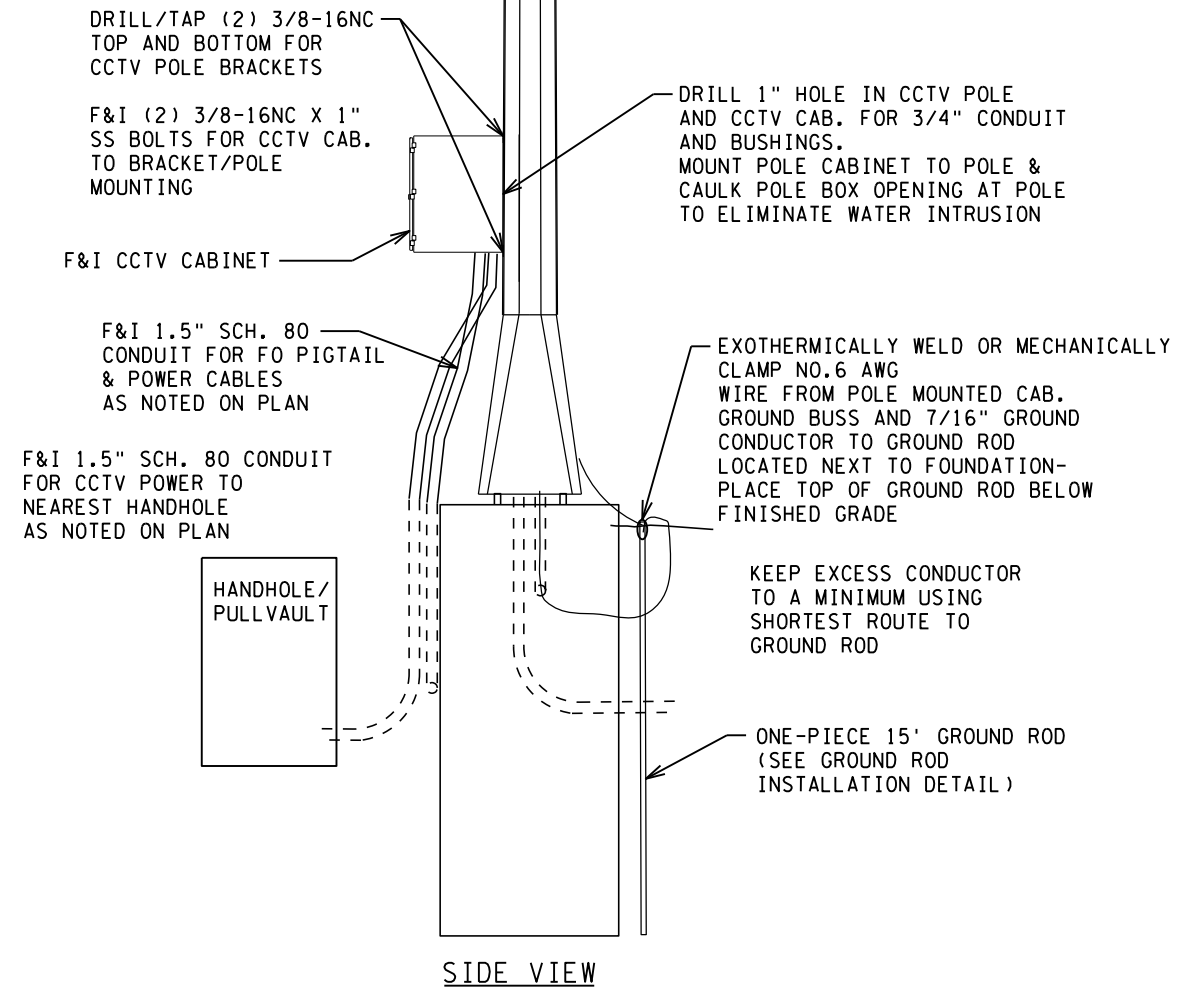
REVISED 6/27/18

REV. NO.	DATE:	/	/
REV. NO.	DATE:	/	/

CERTIFIED BY _____
LICENSED PROFESSIONAL ENGINEER

LIC.NO. 12345 DATE 2018

STATE PROJ. NO. XXXX-XXX (TH XXX) SHEET NO. XXXX? OF XXXXX SHEETS



CCTV ASSEMBLY, CCTV POLEBOX, MOUNTING DETAIL AT INPLACE CCTV LOCATIONS AS NOTED ON PLAN